

CERTIFICATE OF LOCATION OF GOVERNMENT CORNER

**Southwest Corner of Section 16, Township 107 North, Range 41 West, 5th P.M.,
State of Minnesota, County of Murray**

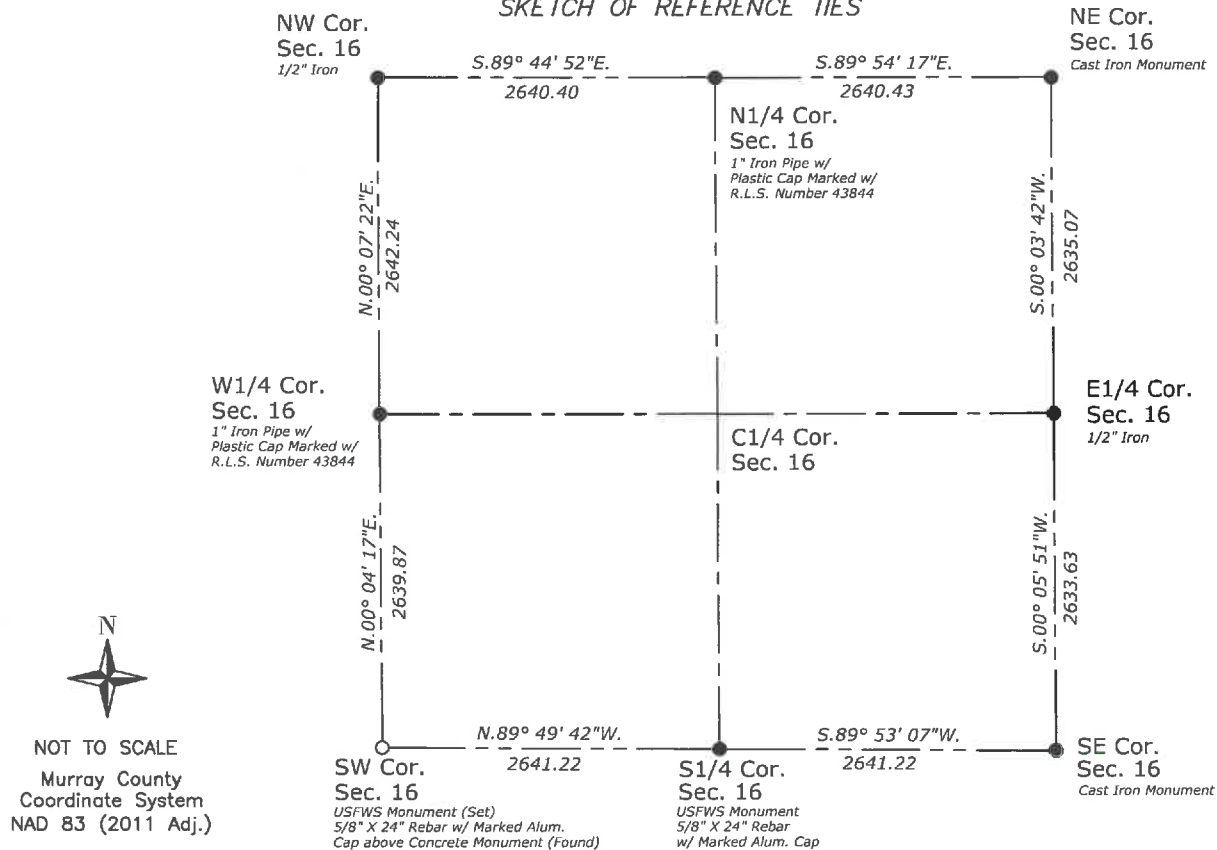
At the corner location shown on the sketch :

☒ On August 5, 2021, found a Deteriorated concrete monument with wire in it.

☒ left monument as found ☐ lowered monument ☐ removed monument (explain)

☒ On August 5, 2021, placed a 5/8" X 24" Rebar with marked aluminum cap above concrete monument.

SKETCH OF REFERENCE TIES



I hereby certify that this survey, plan or report
was prepared by me or under my direct supervision
and that I am a duly Licensed Land Surveyor under
the laws of the State of Minnesota.

Jerry G. Johnson
Licensed Land Surveyor
Minn. License No. 50343

10/4/2021
Date

Employer US Fish and Wildlife Service

OCT 15 2021

Karen Brown
Murray County Recorder

MURRAY COUNTY COORDINATE SYSTEM
NAD 83 (2011 Adj.)

Northing: 179327.42

Easting: 495562.47

(reserved for recording data)

Statement of evidence relative to this corner location is on back page

Statement of Evidence

Southwest Corner of Section 16, Township 107 North, Range 41 West, Murray County, Minnesota.

1861 L. G. M. Fletcher set charred stake and built mound with trench pits per instruction.

2021 USFWS found a brittle 8" concrete monument with wire in the center of it and an rotted wood hub beside it at a depth of 2.5 feet below the surface (gravel) of 140th Avenue. I left the concrete monument in place and set a USFWS monument, 5/8" x 24" rebar with marked aluminum cap above it, 0.5 feet below the surface of the road. It is in the centerline of the roads to the north, south, and west, and in line with the westerly extension of the fence to the east.

Survey on file in the Office of the Regional Director (612-713-5410), Bloomington, MN, U.S. Fish & Wildlife Service, designated "Gary R. Johnson Tract" (30).